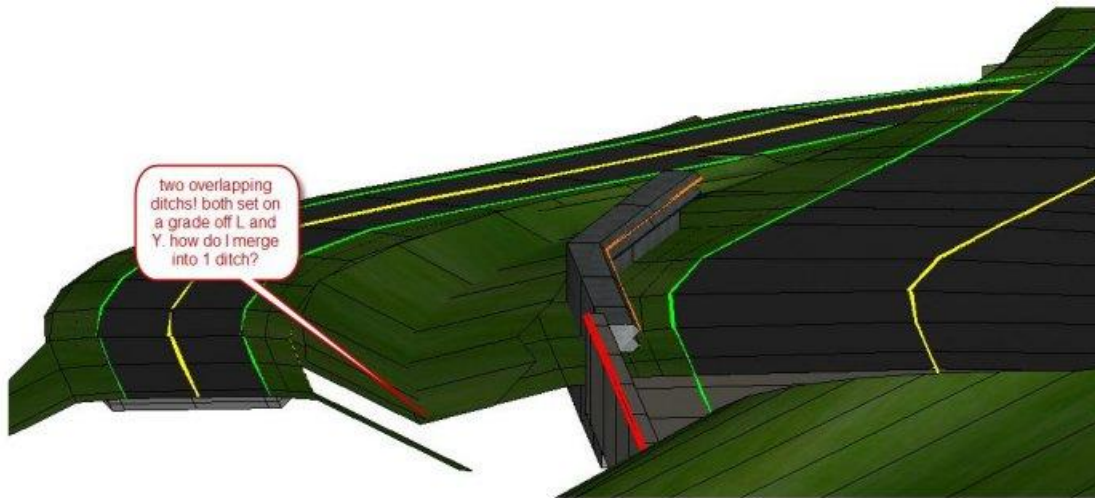


3_10 MERGE -L- AND -Y- LINE DITCHES

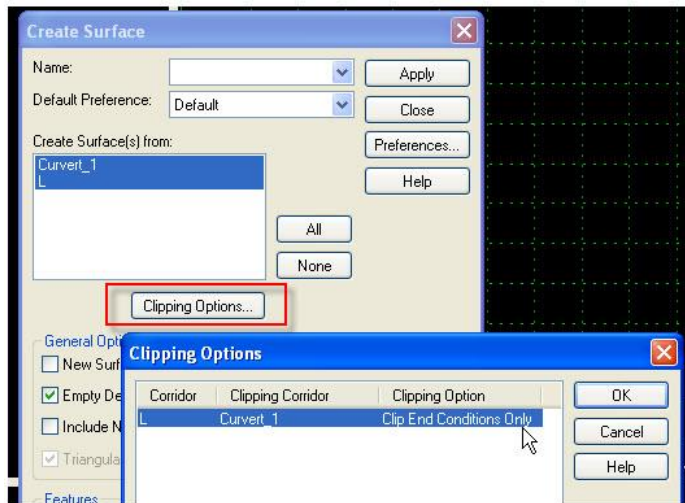
Question:

How do I merge a ditch from my -L- and my -Y-< so that they do not overlap?



Answer:

If both corridors were done in the same IRD, when you go to Create surfaces, click on Clipping Options and double click on the Clipping Options field to get "Clip End Conditions Only".



The best way to delete unwanted ditches is to not let them form in the first place. Under your template drops, if a cut section is formed, you can change them to a fill section with parametric constraints or changing the end condition priorities, e.g. fill slope has a higher priority than cut slopes.